




Xenotech Projects #215
HP 5370/6200/6300 Scanners
(PrecisionScan Pro Software)

The following outlines the steps in using HP PrecisionScan Pro to scan and trace (vectorize) a graphic. The document was plagiarized from a similar document by Mike Clark.

1. Insert your image face down in the U/R corner of the scanner. Press the Scan button on the front of the scanner which will run HP PrecisionScan Pro.

If you need to reposition the original, you can press the Scan button again or click the preview button  in the tool bar.

2. With the image on the screen, use the "pick" tool to drag a box around the desired image.



Figure 1

3. From the Menu Bar, click on the **Output Type | Black and White | Scalable(vector)**

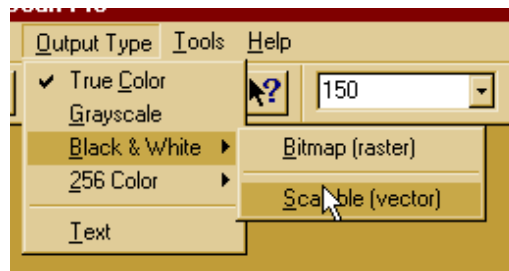


Figure 2

4. From the Menu Bar, click **Edit | Copy**
(See Alternative methods below.)
5. Run or Switch to Xenotech.
6. From the Menu Bar, click **Edit | Paste**
7. (See note #1 below)
You will be asked for a filename under which you want to store your new .XLG (Xenotech LoGo). Assign an 8 character (or less) filename with no spaces and "funny characters." Click the OK button to close the dialog.
8. With the left mouse button held down, drag a box on the screen to represent the approximate size and location (it can be changed later).

Alternate Method #1:

- 4. If you want to save the traced image to disk: while still in HP PrecisionScan Pro, click **File | Save as...** and select an appropriate file folder into which you would like to store the file. This might be A: drive if your scanner is not connected to the PC with which you run the Xenetech. If however you are saving to your local hard drive, you may want to use the file folder created under your C:\XFILES\WMF folder when Xenetech was installed (see Figure 3). Be sure the **Save as Type** combobox shows **Windows Metafile(*.wmf)**. [see note #2]

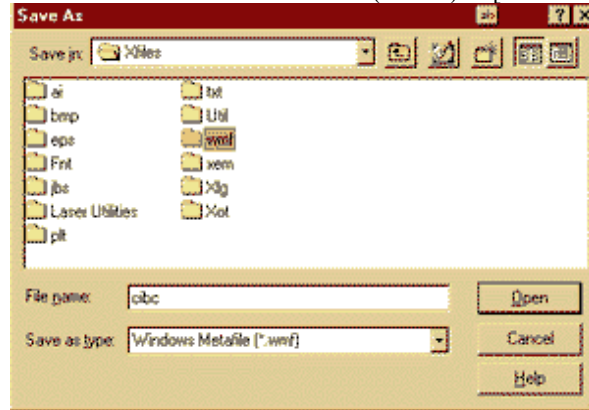


Figure 3

- 5. Run or Switch to Xenetech.
- 6. From the Menu Bar, click **File | To File Import...** Navigate the file you just saved; be sure the *List Files of Type* listbox shows ***.WMF Windows MetaFile** (see figure 4)

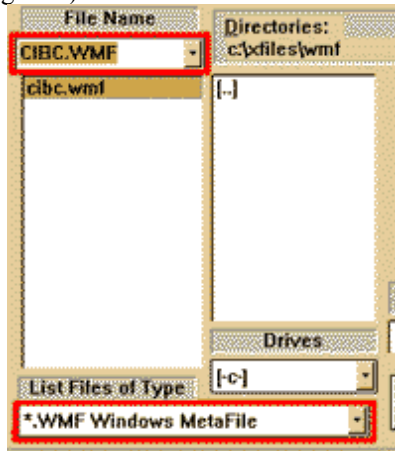


Figure 4

- 7. (See note #1 below)
You will be asked for a filename under which you want to store your new .XLG (Xenetech LoGo). Assign an 8 character (or less) filename with no spaces and "funny characters." Click the OK button to
- 8. With the left mouse button held down, drag a box on the screen to represent the approximate size and location (it can be changed later).

Alternate Method #2:

- 4. If you have a 32bit copy of CorelDRAW (version 6 and higher) running in the background, you can drag the selected graphic and drop it into Corel. Now do your editing and then copy/paste edited graphic into Xenetech.

Notes:

1. All the above assumes that you have **TEXTASLINES=0** in your XENETECH.INI file. To verify or change this, click on **Misc | Edit INI Files...** from the Xenetech menu bar. Be sure **Xenetech** is highlighted in the lower/left listbox labeled **INI files**. Find and highlight **[ImportFonts]** in the lower/right listbox labeled **INI Sections**. Last, find the line in the upper portion of the dialog which says **TextAsLines=1** and change the 1 to 0 (zero) if necessary.
2. Windows MetaFile is the "preferred" windows vector file format. It can be imported into most windows graphics programs including all versions of CorelDRAW.
3. If you need to modify your newly created .XLG file, you will need the optional Drawing Tools "add on" for Xenetech software. Before you begin any modification, it is recommended that you use **Line/Group | Use Wire Frame** so black objects won't be "covered up" by white objects. Then **Color | Explode** to break the graphic up into editable/removable components. You will want to master the use of **Ctrl+drag** to select objects inside other objects. After editing **Color | Sort & Combine** to recombine the pieces. Lastly, **File | To File Export** to save the modified graphic as an XLG.
4. If you are reading this document before purchasing a scanner, the HP6300 replaces the HP6200. 6250 & 6350 have the automatic page feeder (not really useful for engraving). The letters after the 6200/6300 (Cxi, SE, etc.) are not relevant; they have to do with the software "bundled" with the HP software and I don't know anyone who uses any of that anyway.
5. While you can adjust the resolution (DPI) of the scan, normally you want to let PrecisionScan Pro use it's default recommendation. If you must "dinker" with the resolution, normally reducing it will give you better results than increasing it.

===== end Project #215 © Engraving Concepts 2006 <http://www.engravingconcepts.com> =====