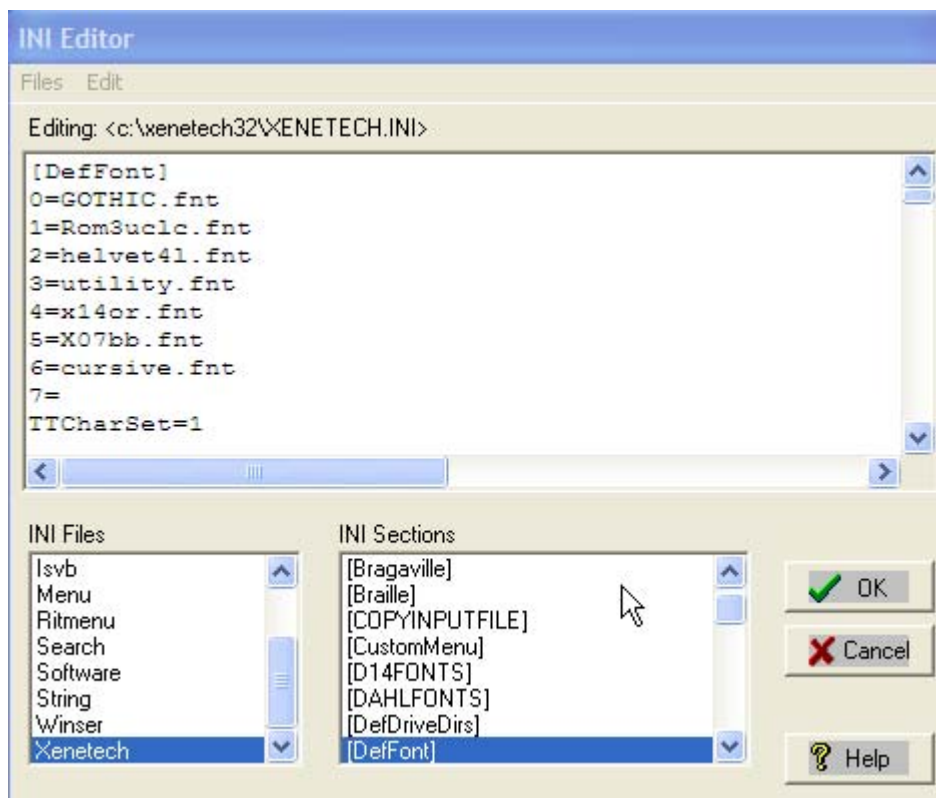




## Xenetech Project #120 Default Fonts"



### Question: How can I get back my "standard" fonts after Opening a saved job?

Most Xenetech users load 6 or 8 of their most often used fonts and then **Save Preferences** to have those same fonts available every time they start the program. Earlier versions of Xenetech software did not give the user an easy way to get back to their standard fonts after **OPENing** a file. Most users know that when a saved job is "recalled", the current fonts are replaced with the fonts that were used by the "recalled" job.

Many Xenetech owners are not aware of a relatively new feature that will allow them to return to a predefined set of default fonts. **How?** Instead of the normal **File | New**, try the following: **Font | Remove Fonts, Do New** from the menu bar.

Didn't work, did it?! You were so excited you tried it without reading the "rest of the story." This only works if you have a **[DefFonts]** section in your **XENETECH.INI** file properly set up.

1. Your software must be 3.07 or later.
2. **Misc | Edit INI Files**
3. Select **XENETECH** in the **INI Files** box in the lower left corner of dialog (see Figure 1)
4. Check the **INI Sections** box in the lower middle of dialog (see Figure 1) to see if there is already a section called **[DefFont]**. If yes, select it. Now click in the **Edit Text Here** box (which is the main portion of the dialog [see Figure 1]). Modify the text to match the format here replacing the fonts listed here with the fonts you most often use.

If the **[DefFont]** section is not in the **INI Sections** box, you must enter the section header as well as your choice of fonts.

Upper/Lower case does not matter, but you must type in the font names exactly as they appear in your font directory (normally ).

Note that this has nothing to do with the "**saved preferences**" fonts. While most will want to make the **[DefFont]** the same as the "**saved preferences**" fonts, some will use a different philosophy and use preferences fonts as "font set 1" and **[DefFont]** as "font set 2". That is, exit/restart Xenetech and you have "font set 1". Do a **Font | Remove Fonts, Do New** and you have "font set 2".

=====Xenetech Project #120 Default Fonts" Copyright Engraving Concepts 2006 =====